

Shops at Tatum and Dynamite

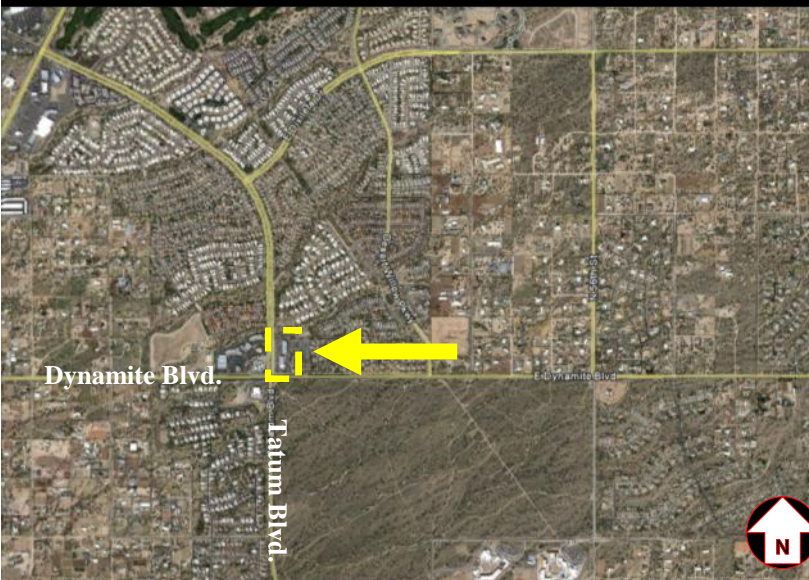
NEC Tatum Blvd. & Dynamite Blvd.

28255 N. Tatum Blvd., Phoenix

\$18/SF - \$22/SF
\$5.44 NNN



1,180 SF - 3,730 SF Space Available



	2010 Demos	1 Mile	3 Mile	5 Mile
Population		6,989	23,783	57,082
HH Income		\$110,128	\$108,604	\$102,811
Households		2,524	8,651	21,781

TRAFFIC COUNTS - (2007)
Dynamite Blvd.: (W) 11,000



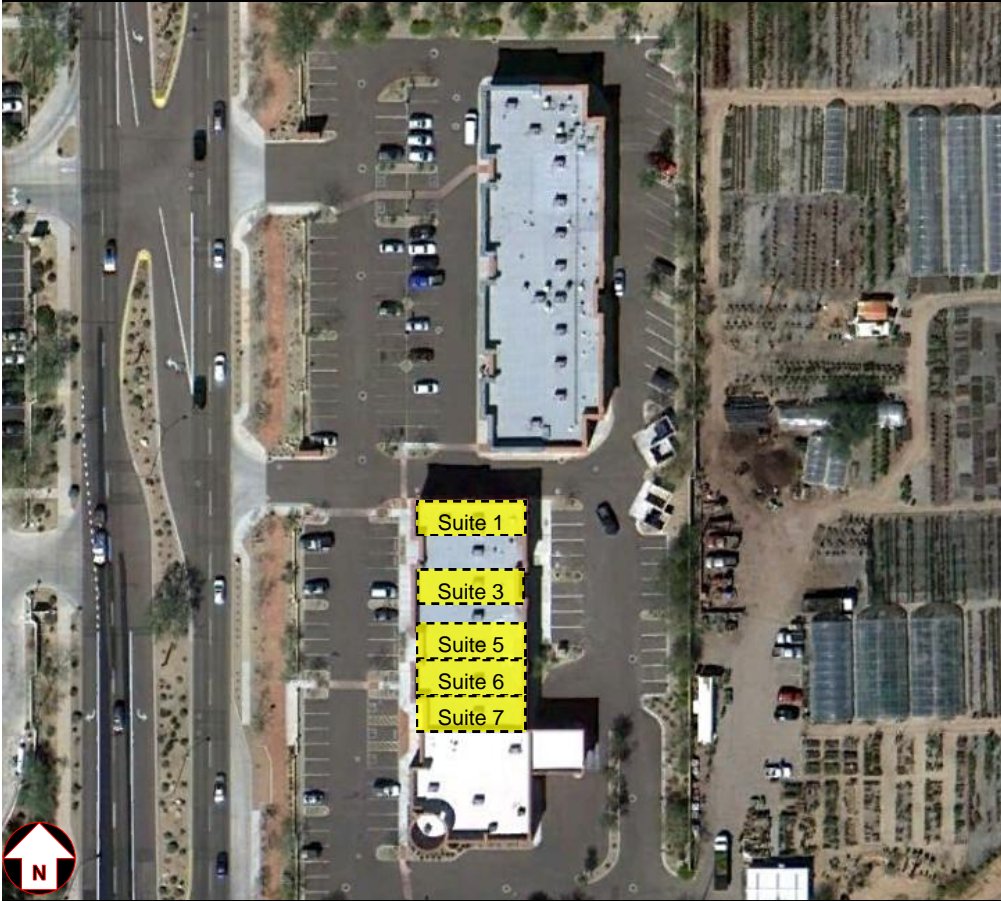
Jake Ertle

(480) 214-9419
JErtle@High-Yield.com

Shops at Tatum and Dynamite

NEC Tatum Blvd. & Dynamite Blvd.

28255 N. Tatum Blvd., Phoenix



AVAILABLE

Suite 1: 1,528 SF—Prime End-Cap

Suite 3: 1,228 SF

Suite 5: 1,227 SF

Suite 6: 1,323 SF

Suite 7: 1,180 SF

Co-Tenants Include:



Jake Ertle

(480) 214-9419
JErtle@High-Yield.com