

TRI CITY PAVILIONS

NEC Main St. & Dobson Rd.

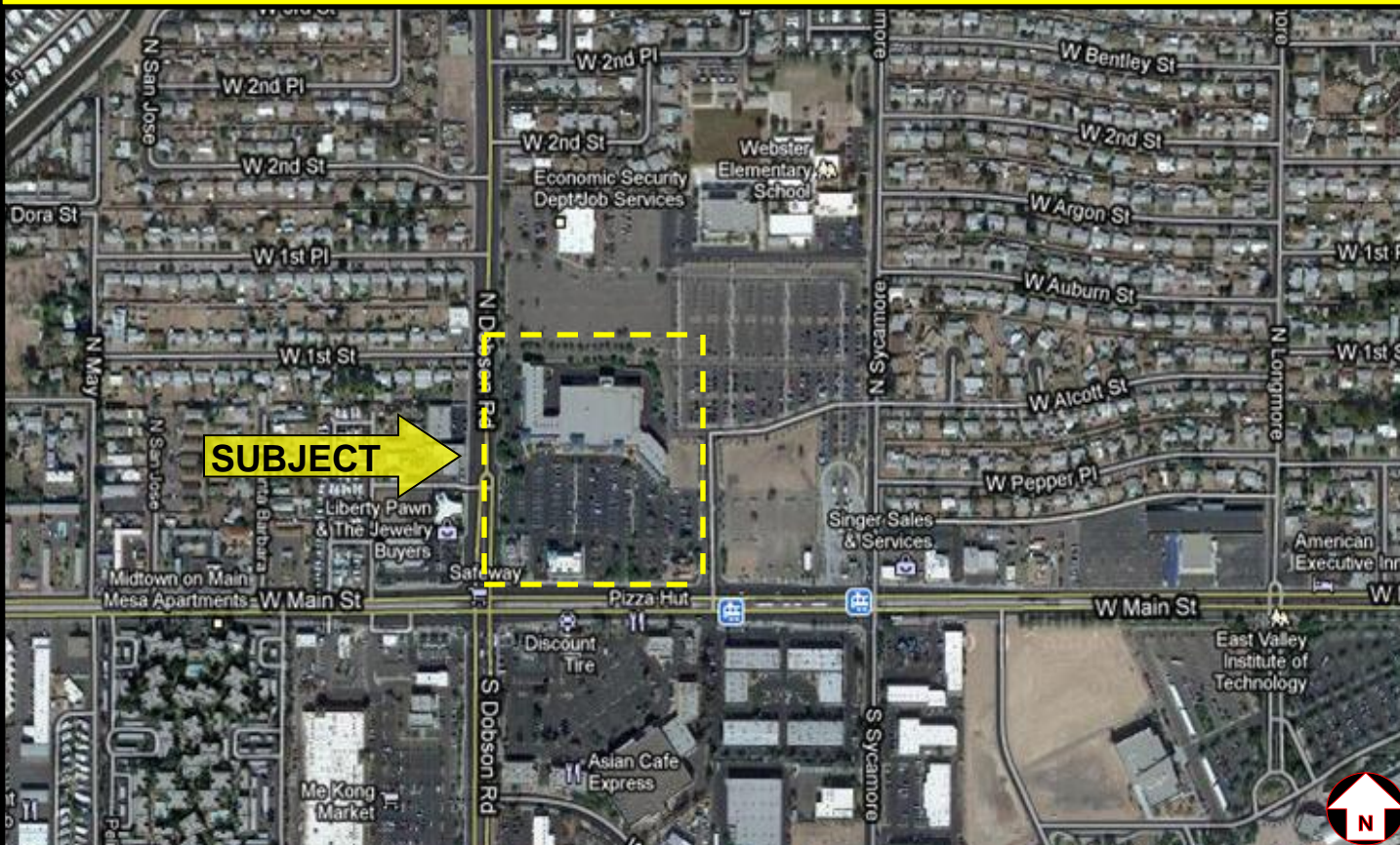
67 N. Dobson Rd., Mesa, AZ

AVAILABLE

\$15/SF \$6.60 NNN



1,000 SF -8,428 SF Shop Space & Two Former Restaurant Pads For Lease



Jake Ertle

(480) 214-9419

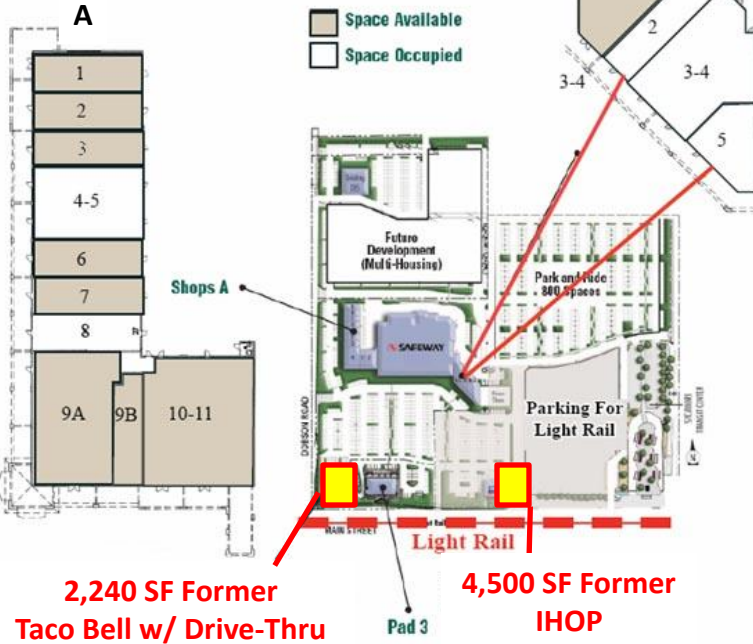
JErtle@High-Yield.com

TRI CITY PAVILIONS

NEC Main St. & Dobson Rd.

67 N. Dobson Rd., Mesa, AZ

**TRICITY
PAVILIONS**



SHOPS A

Suite 1: 1,360 SF
Former Quizno's

Suite 2: 1,200 SF

Suite 3: 1,200 SF

Suite 6: 1,200 SF

Suite 7: 1,200 SF

Suite 9A: 3,244SF
Former Radio Shack

Suite 9B: 997 SF

Suite 10: 1,527 SF

Suite 11: 2,660 SF

SHOPS B

Suite 1: 3,256 SF

2010 Demographics

1 Mile 3 Mile 5 Mile

	1 Mile	3 Mile	5 Mile
Population	23,412	148,033	369,524
HH Income	\$57,015	\$56,278	\$64,624
Households	9,303	58,726	139,308

Traffic Counts

Main Street: (W) 22,300 (E) 20,900
Dobson Road (N) 22,400 (S) 27,700

2,240 SF Former Taco Bell with Drive Thru Available



Jake Ertle

(480) 214-9419

JErtle@High-Yield.com