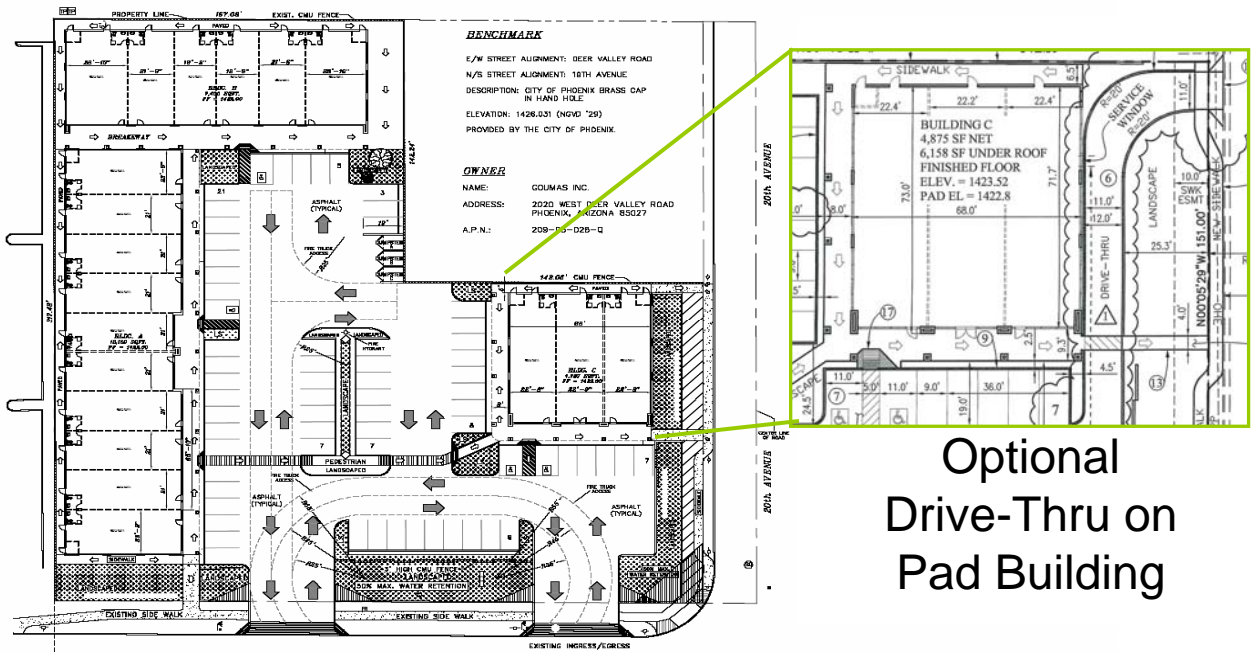


## GOUMAS PLAZA

NWC of Deer Valley Rd & 20<sup>th</sup> Ave.



Exclusively  
Marketed By:

**Jared Lively**  
 480.214.9411  
 480.214.9401 fax  
 Jared@High-Yield.com

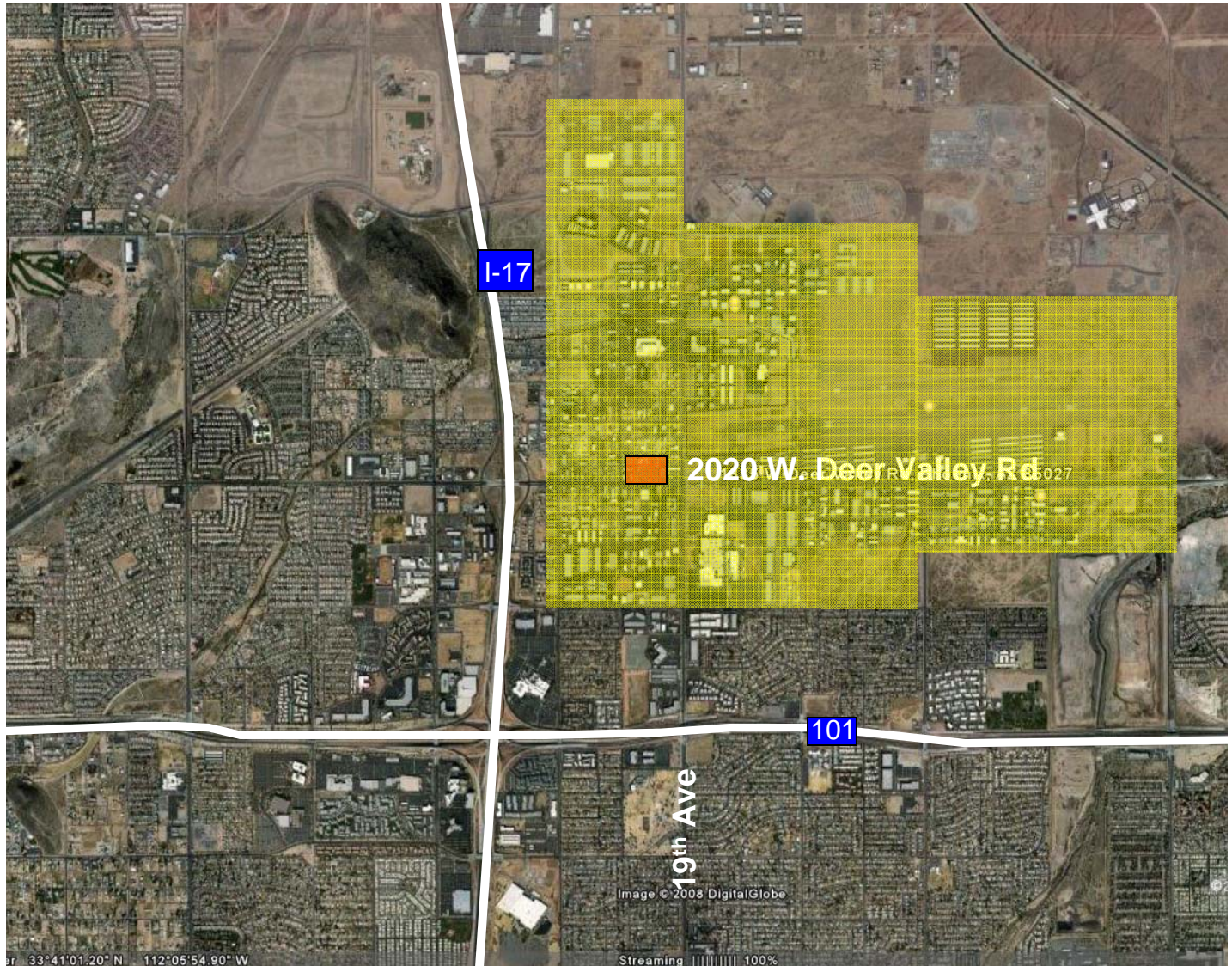
Rein & Grosseohme  
 Commercial Real Estate  
 8767 E. Via De Ventura #370  
 Scottsdale, AZ 85258  
 480.214.9400

<u>Demographics 2007:</u>	<u>One Mile</u>	<u>Three Mile</u>	<u>Five Mile</u>
Daytime Employees	17,740	57,603	93,174
Total Businesses	628	2,772	5,619
<u>Traffic Counts:</u>	<u>Deer Valley Rd</u>		<u>19<sup>th</sup> Ave.</u>
	27,300 VPD		25,600 VPD

Property Highlights:

\* Located in the 3<sup>rd</sup> highest daytime populated trade area in Metro Phoenix, close proximity to over 3,000,000 sf office/industrial space.

# GOUMAS PLAZA



- \* Located in the heart of the Deer Valley Airpark, the North Phoenix Business hub.
- \* Very convenient access from I-17 and Loop 101 freeways.

Exclusively Represented by:

**Jared Lively**

Retail Leasing Specialist

480-214-9411

Jared@High-Yield.com

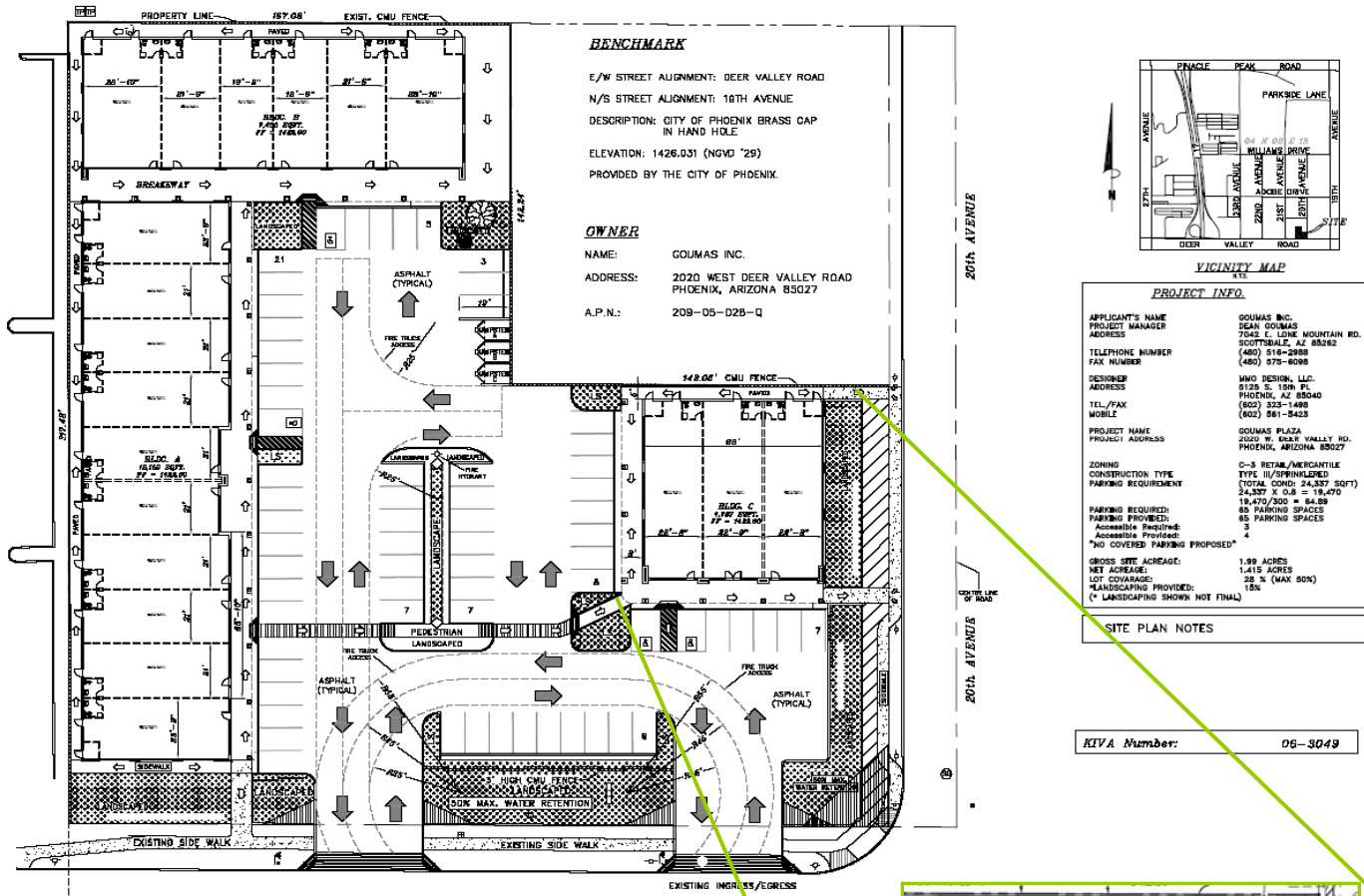
Rein & Grossoehme Commercial Real Estate, LLC.

8767 E. Via De Ventura #370 - Scottsdale, AZ 85258

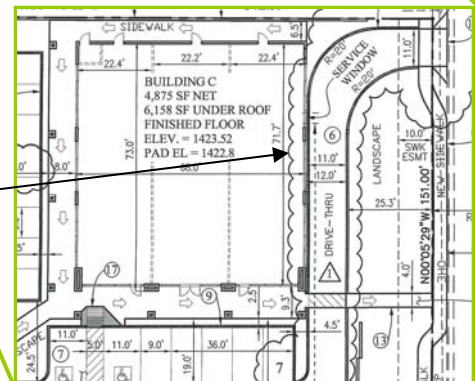
The information contained herein has been secured from sources we believe to be reliable, but we make no representations or warranties, expressed or implied, as to the accuracy of the information. References to square footage or age are approximate.

# GOUMAS PLAZA

## SITE PLAN



Showing the  
Optional Drive-  
Thru Lane



Exclusively Represented by:  
**Jared Lively**  
Retail Leasing Specialist  
480-214-9411  
Jared@High-Yield.com

Rein & Grosseohme Commercial Real Estate, LLC.  
8767 E. Via De Ventura #370 - Scottsdale, AZ 85258

The information contained herein has been secured from sources we believe to be reliable, but we make no representations or warranties, expressed or implied, as to the accuracy of the information. References to square footage or age are approximate.